



# TICKALERT

Track ticks online at [www.tickalert.com](http://www.tickalert.com)



- Help prevent tick-borne disease, including Lyme disease.
- Track tick populations where you live.
- Track tick populations where you plan to visit.
- Learn how to protect yourself and your pets.

## Tick stages can feed on you or your dog.



**Dominant Species:**  
Deer Tick/Black-Legged Tick  
**Most Common Tick-Borne Disease:**  
Lyme Disease



**Dominant Species:**  
Brown Dog Tick  
**Most Common Tick-Borne Disease:**  
Canine Ehrlichiosis, Rocky Mountain Spotted Fever, Tick Paralysis

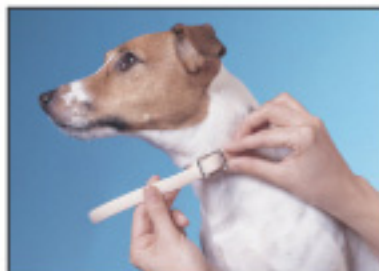


**Dominant Species:**  
Lone Star Tick  
**Most Common Tick-Borne Disease:**  
Rocky Mountain Spotted Fever, Tick Paralysis, Q Fever, Lyme Disease



**Dominant Species:**  
American Dog Tick  
**Most Common Tick-Borne Disease:**  
Rocky Mountain Spotted Fever, Tularemia, Tick Paralysis

## Use Preventic Collar properly.



**1.** Apply collar to your dog, making sure collar contacts skin.



**2.** Adjust for proper fit (two fingers fit under collar). Be sure collar doesn't loosen-check occasionally.



**3.** Clip off excess collar. Wrap excess in newspaper and dispose of properly.

## PREVENTIC TIPS

- Check Preventic periodically to make sure that it has not loosened. Re-adjust as necessary.
- Once applied, do not remove Preventic (except while bathing), as the continual effect of the active ingredient may be interrupted.
- Bathing your dog may remove the active ingredient from your dog's skin and haircoat.



For more information call:  
**1-800-338-3659**  
[www.preventic.com](http://www.preventic.com)

© Preventic is a registered trademark of Virbac AH, Inc.  
© 2005 Virbac AH, Inc.

# PREVENTIC®

## TICK COLLAR FOR DOGS



Provide your dog the ultimate in tick protection. A Preventic® Collar helps kill ticks and prevent Lyme disease while reducing the risk of other tick-borne diseases.

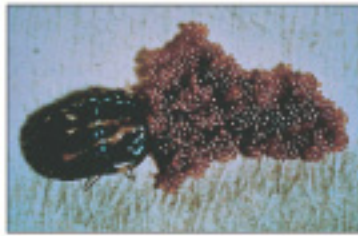
## Ticks are a nuisance for your dog and your family.



**WHIRLING BARBS** - The head of the tick features barbed mouthparts to pierce flesh.

Not only do they cause blood loss, irritation and infection where they attach, they may also transmit to your dog and your family certain diseases, one of which is the dangerous Lyme disease. A variety of diseases are transmitted throughout the country by different ticks. The maps on the right show the geographic distribution of these diseases as well as the tick that carries the disease.

Preventic is unique. It is the exclusive tick-only product on the market. Being tick-specific explains why it is so effective against ticks.



**TICK EGGS** - Ticks and Lyme disease are a worldwide threat to dogs and humans. A single tick can lay up to 20,000 eggs in its lifetime.

## Preventic kills and detaches ticks.

Preventic kills and detaches ticks in small, medium-size and big dogs within hours and prevents new ticks from attaching for up to three months. With Preventic, there is less need to pick off ticks by hand. Preventic is effective for dogs of all sizes, three months and older.

## Preventic prevents your dog and your family from contracting tick-borne diseases.

Ticks carry microorganisms which may be transmitted to you and your dog. One of the most important diseases is Lyme disease. For Lyme disease, it takes two to three days for microorganisms to migrate from the tick's stomach to your dog's or your blood stream. Since Preventic actually kills and detaches 99% of ticks within 24 hours, the product generally prevents Lyme disease.

## Preventic poses no significant risk to dogs or humans.

As previously stated, Preventic is highly tick-specific, and when used as directed poses no significant risk to dogs or humans. Preventic specifically interferes with the tick's metabolism, causing the tick to detach and die.

## Preventic is convenient.

Preventic is more convenient than any tick spray or drops. Once Preventic has been fitted, you don't have to worry about ticks for up to three months, whereas sprays and drops have to be applied frequently, making continuous tick protection labor-intensive and expensive.

## How does Preventic work?

Preventic works as a time-controlled slow-release system. Over three months following the fitting of Preventic, the active ingredient is released at the correct consistent level. Preventic delivers the exact quantity needed. With Preventic, there is no inefficient underdosage or useless over-dosage! Preventic uses the normal oils of your dog's skin and haircoat as a vehicle to homogeneously spread the active ingredient over the dog from head to tail, protecting all areas. When fitting Preventic on the animal for the first time, allow approximately 24 hours for all parts of the body to be covered and for Preventic to become fully protective.



## Can your dog be bathed or shampooed?

Because the active ingredient is carried in the oils of the skin, it is unlikely that the activity of Preventic is completely rinsed-off when the animal gets wet. However, if a detergent soap or shampoo is used, efficacy build-up is more likely to be reduced. It is advisable to remove Preventic before shampooing and to replace it afterwards. Preventic will be fully protective again in 24 hours.

## How do dogs become infested with ticks?

Both female and male ticks are blood-sucking parasites. Although they often feed for four to five days, ticks are not permanent parasites. After a blood meal, they usually detach and fall to the ground, where they find a dark, warm and humid spot to hide - and to lay eggs, if they are female. Bushes and wooded areas in spring and fall are places where ticks are usually found and where dogs often get infested. Unlike fleas, in which only the adult stage is considered parasitic, all tick stages can feed on you or your dog.